



东旭集团

TUNGHSU GROUP

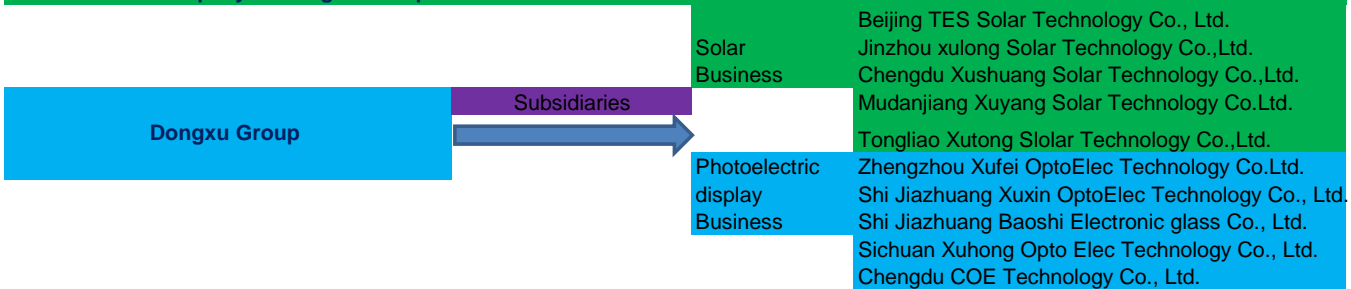
ADD: 10/F, Tower A, TYG Center, No.C2, East 3rd Ring North Rd, Chaoyang District., Beijing 100027, China.
 TEL: 0086 10 84417861,FAX: 0086 10 84417820,MOBILE: 0086 15201530162, WEBSITE: www.dong-xu.com
 CONTACT: Jack Zhao, International Sales Manager , EMIL: zhaole@dong-xu.com or jack.zhaole@gmail.com

1. About Dongxu Group

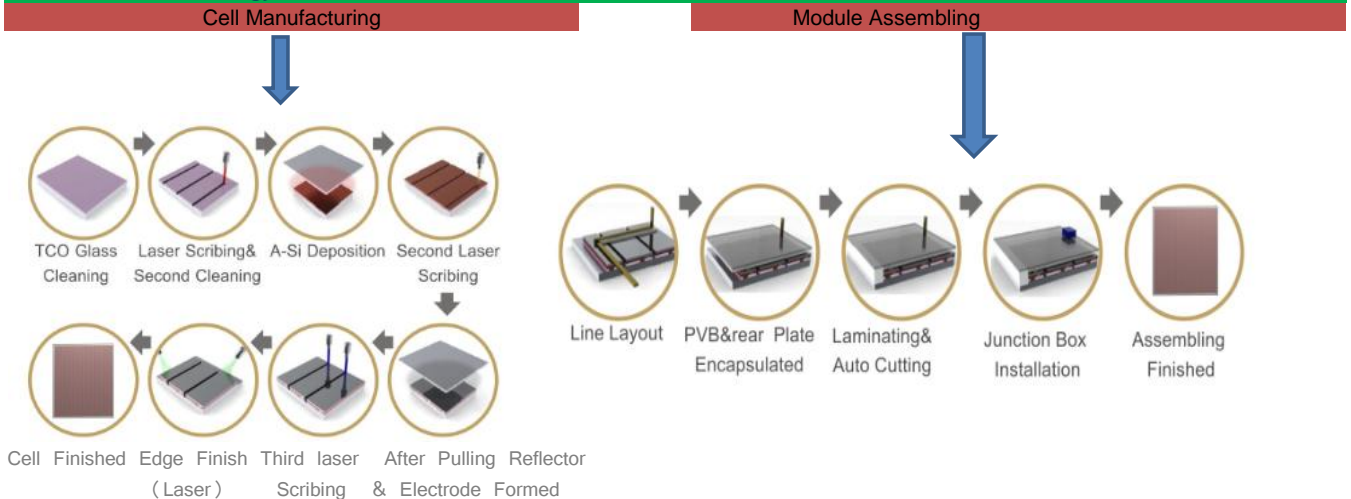
Found in 1997, Dongxu Group is the only company which has self owned intellectual property rights from R&D, desiging to manufacturing and technical suport of PFD glass substrate in China. Now it has become a diversified giant high-tech group with photoelectric display and solar cells as its core business, the group has set up 8 industrial bases nationwide and founded 2 diversified group companies, one of which is listed, and more than ten subsidiary companies. It has one FPD glass substrate R&D center and one solar cells resarch institute with more than 300 mebers including over 80 foreign experts.The group has a long -terr business partnership with many famous international companies.

PV industry is the second largest core business of Dongxu group. The group entered thin film a-Si solar cells industry in 2007, depending on its FPD industry experiences and technique, Dongxu Group founded solar energy research institute with over ten international and foreign experts as the key staffs. In the mean time, it carried out comprehensive R&D in thin film solar cells techhnology and whole production line equipments together with advanced solar cells enterprises abroad, and also the group has been in possession of mature technology in thin film solar cells manufacturing.

2. Subidiaries company of Dongxu Group



3. Product Art Technology



4. Product Specification

Thin film a-Si Solar Module

Product Name	Thin film a-Si solar module
Size (mm)	LxWxT: 1300x1100x7.9
Weight (KG)	26
Transparency	Opaque/Partial / Full
En capsulation Material	PVB,thickness:0.76mm
Front glass	TCO glass:3.2mm
Back glass	Tempered glass: 4mm
Operating	-40℃~85℃
Junction Box	IP 65 level
Output Cable	Length: 2x1000mm , 2.5mm ²
Test Condition	E=1000w/m ² Temperature =25℃, AM=1.5
Junction Cable	Rated Voltage: 1000V.D.C, 4mm ²
Teperature Coefficient	Isc: +0.08%/k
	Voc:-0.3%/k
	Pmpp:-0.23%/k

a-Si solar module

Model	Power	Vmpp(V)	Impp(a)	Voc(V)	Isc(A)
DX80	80	80.11	0.99	111.36	1.27
DX85	85	81.25	1.05	112.20	1.28
DX90	90	81.66	1.1	112.61	1.3
DX95	95	82.04	1.16	112.99	1.32
DX100	100	82.35	1.21	113.30	1.38

a-Si/uc-Si Solar Module

Model	Power	Vmpp(V)	Impp(a)	Voc(V)	Isc(A)
DX120	120	95.2	1.27	129.30	1.52
DX125	125	97.7	1.29	132.00	1.53
DX130	130	98.3	1.33	132.60	1.57
DX135	135	98.9	1.37	133.20	1.6
DX140	140	99.5	1.42	133.70	1.64

5% Transparent a-Si Solar Module

Model	Power	Vmpp(V)	Impp(A)	Voc(V)	Isc(A)
DX75	75	80.01	0.93	111.36	1.21
DX80	80	81.14	0.99	112.20	1.22
DX85	85	81.57	1.03	112.61	1.24
DX90	90	81.95	1.09	112.99	1.25
DX95	95	82.23	1.16	113.30	1.31

10% Transparent a-Si Solar Module

Model	Power	Vmpp(V)	Impp(A)	Voc(V)	Isc(A)
DX70	70	79.92	0.89	111.36	1.14
DX75	75	80.95	0.95	112.20	1.15
DX80	80	81.31	0.99	112.61	1.17
DX95	95	81.69	1.05	112.99	1.19
DX90	90	82.02	1.11	113.30	1.24

15% Transparent a-Si Solar Module

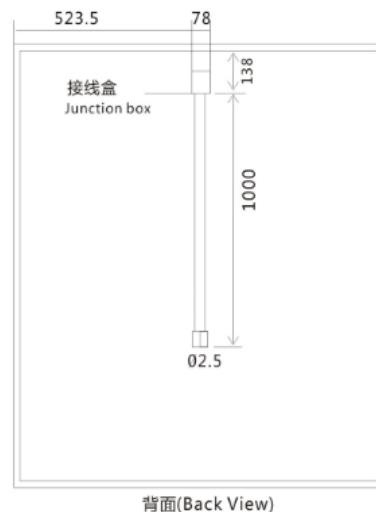
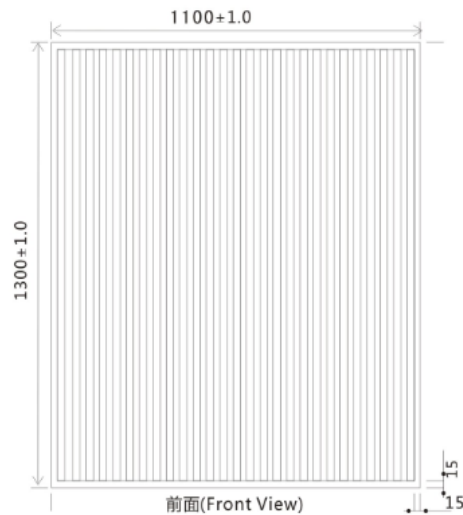
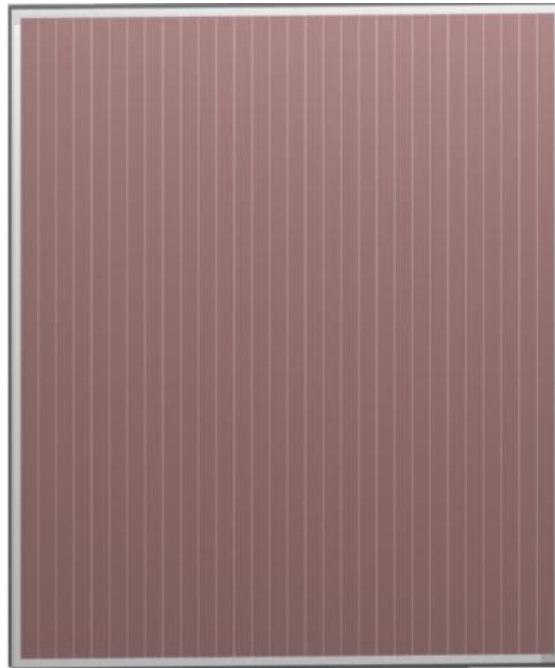
Model	Power	Vmpp(V)	Impp(A)	Voc(V)	Isc(A)
DX65	65	78.81	0.84	111.36	1.08
DX70	70	79.93	0.89	112.61	1.11
DX75	75	80.27	0.93	112.99	1.12
DX80	80	80.65	0.98	113.30	1.17

20% Transparent a-Si Solar Module

Model	Power	Vmpp(V)	Impp(A)	Voc(V)	Isc(A)
DX55	55	78.35	0.71	111.36	1.02
DX60	60	78.95	0.79	112.61	1.03
DX65	65	79.54	0.85	112.99	1.06
DX70	70	79.94	0.91	113.30	1.1

FULL Transparent a-Si Solar Module

Model	Power	Vmpp(V)	Impp(A)	Voc(V)	Isc(A)
DX75	75	80.01	0.93	80.01	1.21
DX80	80	81.31	0.99	81.31	1.22
DX85	85	81.69	1.05	81.69	1.24
DX90	90	81.95	1.09	81.95	1.25
DX95	95	82.23	1.16	82.23	1.31



Application Field

PV Power Plant/Station	BIPV Rooftop PV Power System	PV Agricultural Greenhouse	Other Application PV street lamps, road signs, signal direction boards, etc
------------------------	---------------------------------	----------------------------	--



100KW屋顶光伏电站系统（并网） 100KW Roof-Top PV System (Grid Connected)

电站系统图Roof-Top PV System



电站概况General Descriptions

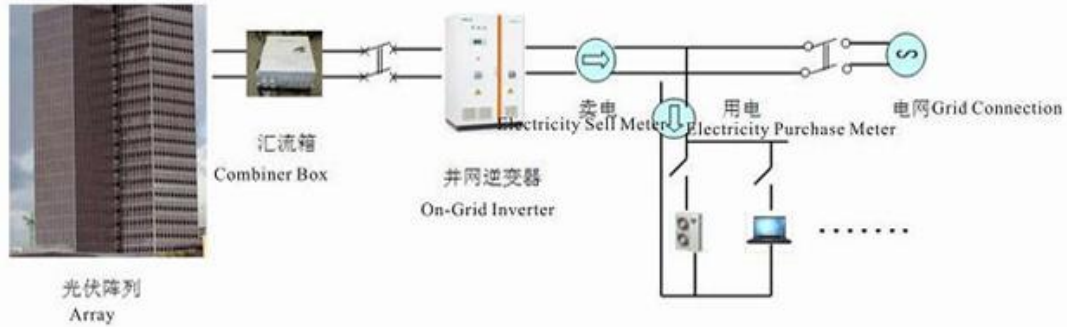
项目名称 Name of Project	100KW薄膜太阳能电站系统 100KW a-si PV System	日发电量 Daily Generation	316KWh
系统类型 Type	并网系统 Grid Connected	年发电量 Annual Generation	115340 KWh
并网类型 Grid Connection Type	0.4KV/10KV	负载类型 Load	农业水泵/应急电源/交直流电机 Pump/Emergency Power
装机容量 Installed Capacity	100KW	负载功率 Load Power	60KW
电池板数量 Quantities of Panels	1000Pieces	输出类型 Output	交流/直流 AC/DC
电池板规格 Dimensions	1100*1300*7.8	建设地点 Location	成都 Chengdu

配置清单Equipment List

名称 Name	数量 Quantity	名称 Name	规格 Specification	数量 Quantity
电池组件 Solar Module	1000Pieces	避雷柜 Lightening Protection Box	国标 National Standard	1Set
逆变器 Inverter	1Set	监控系统 Monitoring System	国标 National Standard	1Set
一级汇流箱 First Level Combiner Box	25Set	气象数据采集系统 Meteorological Data Collection System	南瑞监控系统 Nanrui Monitoring System	1Set
二级汇流箱 Second Level Combiner Box	2Set	防逆流配电箱 Anti-Reverse Current Distribution Box	国标 National Standard	1Set
直流配电箱 DC Power Distribution Box	1Set	组件支架 Modules Support	热镀锌 Hot Galvanizing	1Set
交流配电箱 AC Power Distribution Box	1Set	线缆 Cables	国标 National Standard	1Set

100KW光伏幕墙系统 (并网) 100KW PV Curtain Wall System(Grid Connected)

光伏幕墙系统图PV Curtain Wall System



电站概况General Descriptions

项目名称 Name of Project	100KW薄膜太阳能电站系统 100KW a-si PV System	日发电量 Daily Generation	316KWh
系统类型 Type	并网系统 Grid Connected	年发电量 Annual Generation	115340 KWh
并网类型 Grid Connection Type	0.4KV/10KV	负载类型 Load	公司照明/办公用电/应急电源 Office/Emergency Power
装机容量 Installed Capacity	100KW	负载功率 Load Power	60KW
电池板数量 Quantities of Panels	1000Pieces	输出类型 Output	交流/直流 AC/DC
电池板规格 Dimensions	1100*1300*7.8	建设地点 Location	成都 Chengdu

配置清单Equipment List

名称 Name	数量 Quantity	名称 Name	规格 Specification	数量 Quantity
电池组件 Solar Module	1000Pieces	避雷柜 Lightening Protection Box	国标 National Standard	1Set
逆变器 Inverter	1Set	监控系统 Monitoring System	国标 National Standard	1Set
一级汇流箱 First Level Combiner Box	25Set	气象数据采集系统 Meteorological Data Collection System	南瑞监控系统 Nanrui Monitoring System	1Set
二级汇流箱 Second Level Combiner Box	2Set	防逆流配电柜 Anti-Reverse Current Distribution Box	国标 National Standard	1Set
直流配电柜 DC Power Distribution Box	1Set	组件支架 Modules Support	热镀锌 Hot Galvanizing	1Set
交流配电柜 AC Power Distribution Box	1Set	线缆 Cables	国标 National Standard	1Set

Project Plan 3

100KW农业大棚电站系统（并网） 100KW Greenhouse PV System (Grid Connected)

电站系统图Greenhouse PV System



电站概况General Descriptions

项目名称 Name of Project	100KW薄膜太阳能电站系统 100KW a-si PV System	日发电量 Daily Generation	316KWh
系统类型 Type	并网系统 Grid Connected	年发电量 Annual Generation	115340 KWh
并网类型 Grid Connection Type	0.4KV/10KV	负载类型 Load	农业水泵/应急电源/交直流电机 Pump/Emergency Power
装机容量 Installed Capacity	100KW	负载功率 Load Power	60KW
电池板数量 Quantities of Panels	1000Pieces	输出类型 Output	交流/直流 AC/DC
电池板规格 Dimensions	1100*1300*7.8	建设地点 Location	成都 Chengdu

配置清单Equipment List

名称 Name	数量 Quantity	名称 Name	规格 Specification	数量 Quantity
电池组件 Solar Module	1000Pieces	避雷柜 Lightening Protection Box	国标 National Standard	1 Set
逆变器 Inverter	1 Set	监控系统 Monitoring System	国标 National Standard	1 Set
一级汇流箱 First Level Combiner Box	25Set	气象数据采集系统 Meteorological Data Collection System	南瑞监控系统 Nanrui Monitoring System	1 Set
二级汇流箱 Second Level Combiner Box	2Set	防逆流配电柜 Anti-Reverse Current Distribution Box	国标 National Standard	1 Set
直流配电柜 DC Power Distribution Box	1 Set	组件支架 Modules Support	热镀锌 Hot Galvanizing	1 Set
交流配电柜 AC Power Distribution Box	1 Set	线缆 Cables	国标 National Standard	1 Set

Contact: Jack Zhao

TEL: 0086 10 84417861

MOBILE: 0086 15201530162

FAX: 0086 10 84417820

EMIL: zhaole@dong-xu.com or jack.zhaole@gmail.com

WEBSITE: www.dong-xu.com

ADD: 10/F, Tower A, TYG Center, No.C2, East 3rd Ring North Rd, Chaoyang District., Beijing 100027, China.